

# YOU be the JUDGE

?

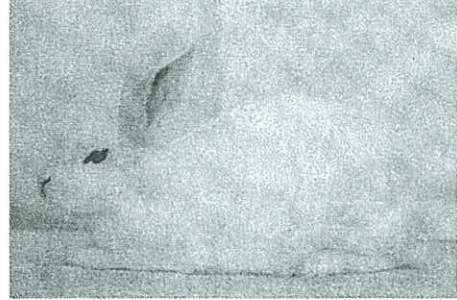
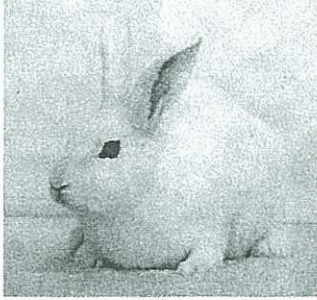
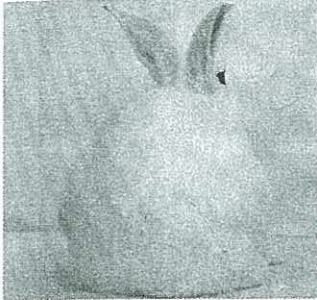
## BLANC DE HOTOT - SENIOR BUCKS

*Try on the Jacket and See How it Fits!*  
Think you know Blanc de Hotots? Test your knowledge and place the animals from 1st to 4th place. Email your placements to the ARBA office or [domesticrabbits@arba.net](mailto:domesticrabbits@arba.net) so we may compile the results for our next issue.

### BLANC DE HOTOT A

YOUR RANKING \_\_\_\_\_

COMMENTS




---

---

---

---

---

---

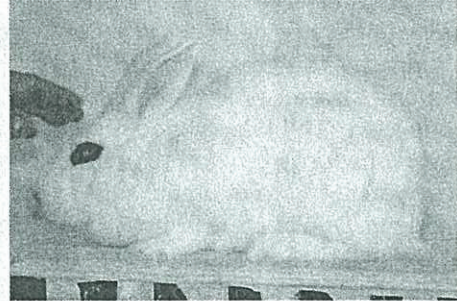
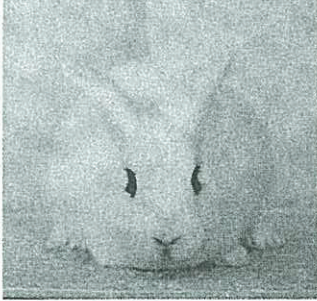
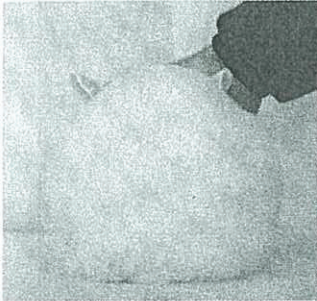
---

---

### BLANC DE HOTOT B

YOUR RANKING \_\_\_\_\_

COMMENTS




---

---

---

---

---

---

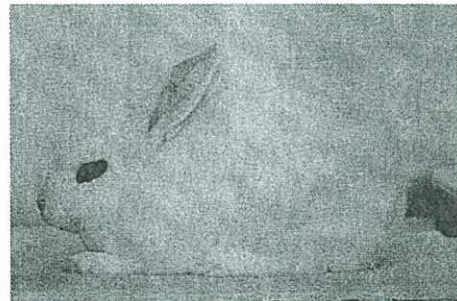
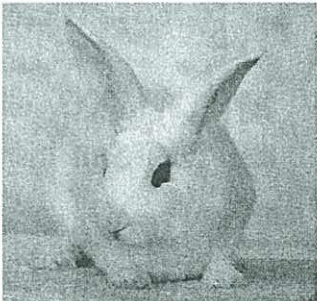
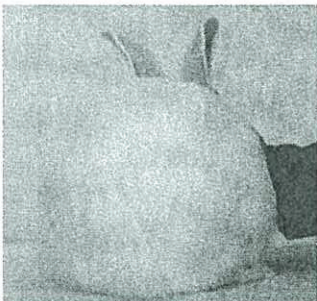
---

---

### BLANC DE HOTOT C

YOUR RANKING \_\_\_\_\_

COMMENTS




---

---

---

---

---

---

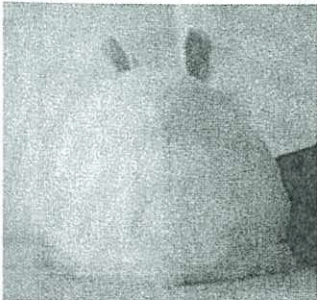
---

---

### BLANC DE HOTOT D

YOUR RANKING \_\_\_\_\_

COMMENTS




---

---

---

---

---

---

---

---



# YOU be the JUDGE

## RESULTS!

*Justify your reasons based on the ARBA Standard of Perfection. Animals in classes may be a bit close, resulting in some potential variations in placement depending upon interpretation of point assets and deficits of the animals in the class.*

The purpose of this exercise is to apply the ARBA Standard of Perfection and justify your placements accordingly. The judges and breeders assessed the animals according to the ARBA Standard of Perfection. Please note that all have offered clear justification for their reasons. It is our hope that this feature will incite discussion and promote education of all breeds.

SUBMITTED BY U. B. A. JUDGE

CABD

For this class of Blanc de Hotots I place them CABD. D is fourth as it fails in depth of body and width through the loin. I grant that D has slightly better shoulders and markings,

PLACEMENTS  
RECEIVED BY ARBA  
MEMBERSHIP

CABD	34%	CDBA	12%
DCAB	22%	CBAD	10%
BDCA	17%	CABD	5%

but the midsection and hindquarter are inadequate to place over B. B is third place as it is a bit long in the shoulders and peaks too far forward, sloping off at the hindquarters. A is second although I will grant that B has a bit better width at the shoulder. A has a better topline and balance to the midsection and hindquarters in addition to cleaner markings. I grant that A has a bit better depth of shoulder, however on overall balance C is first place. C is over posed with the hindfeet too far forward making the hindquarter appear weaker than it actually is. C is wider through the loin and although it has slight bleeding of color on the right eyeband, possesses the most balance in this class of Blanc de Hotots.

SUBMITTED BY ANNETTE

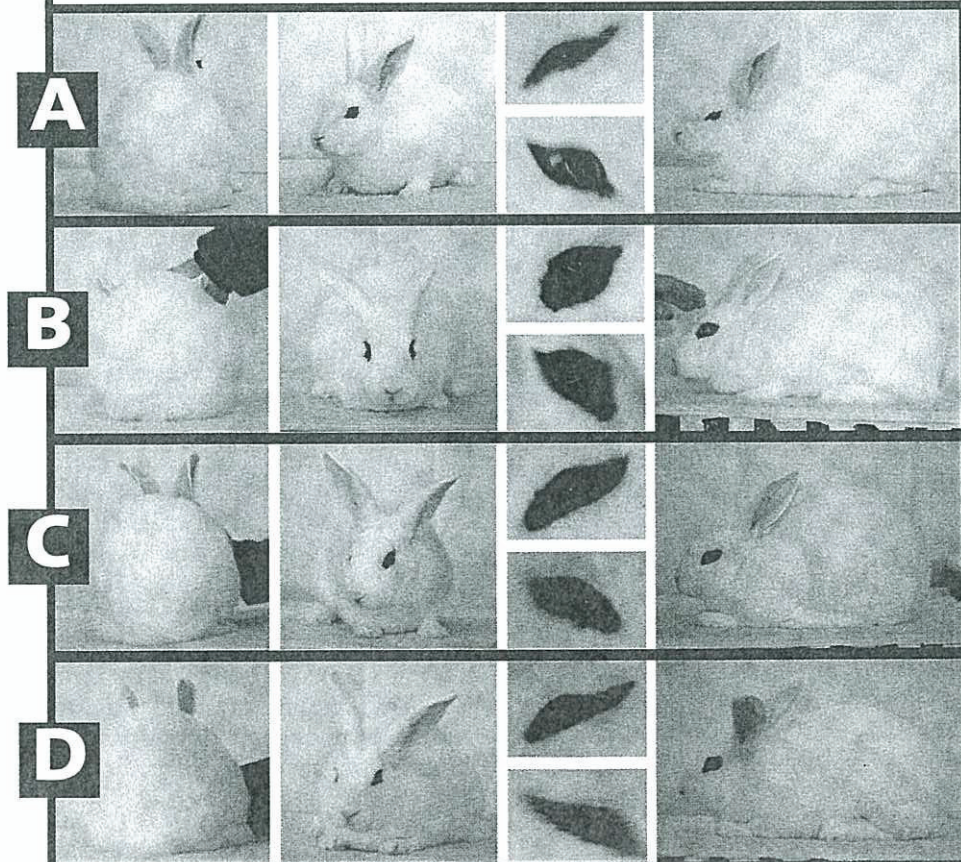
DCAB

My six year old puts the order as D, C, A, B - D is first because it looks like a nice bunny. B is last because he doesn't like the head on him at all.

My order would be D, B, C, A. D because he simply looks like a rabbit I wouldn't mind having around. A is last because it looks small and narrow.

Beyond that.. Well.. B and C look overall quite similar to me with B just being a tad bit wider.

## Blanc de Hotot



SUBMITTED BY

LAURIE STALEY-JONES

BDCA

4th place Rabbit A: Rabbit A lacks in the shoulders. Lacking in loin. Could use a little more fullness and roundness in hindquarters. Needs more width to the head. Good eyebands. Right is a little feathered.

3rd place Rabbit C: Rabbit C is low in the shoulders. Lacks width in the head to the 1st & 2nd place animals. Good hindquarters, could use a touch more fullness.

Even eyebands. Right band has a touch of a drag in it.

2nd place Rabbit D: Rabbit D has nice width to the hindquarters, but is a little flat over the top. Good shoulders. Good head. Nice long ears, good example of Hotot ear. Eyebands are pretty uniform.

1st place Rabbit B: Rabbit B has nice width & depth to hindquarters. Excellent broad "bucky" head. Good ears. Nice shoulders. Nice eyebands. Could be more uniform, a little ragged. Rabbit B wins on overall type as body in the Hotot is worth 60 points & markings are only 15.